

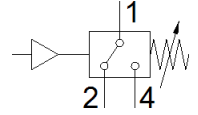
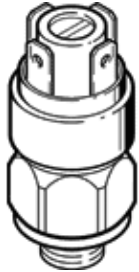
pressure switch

PEV-1/4-A-SW27

Part number: 159259

FESTO

Opens or closes an electrical circuit when a certain pressure value is reached. Adjustable pressure switching point.



Data sheet

Feature	Value
CE mark (see declaration of conformity)	to EU directive low-voltage devices
Measured variable	Relative pressure
Measurement method	Pneu./elect. pressure transducer
Pressure measuring range	1 ... 10 bar
Operating pressure	1 ... 10 bar
Operating medium	Compressed air in accordance with ISO8573-1:2010 [7:::]
Note on operating and pilot medium	Lubricated operation possible (subsequently required for further operation)
Medium temperature	-20 ... 80 °C
Ambient temperature	-20 ... 100 °C
Switching element function	Changeover switch
Max. switching frequency	3 Hz
Max. switching output voltage AC	250 V
Max. switching output voltage DC	250 V
Max. output current	4,000 mA
Operating voltage range DC	12 ... 250 V
Electrical connection	4-pin Plug
Mounting type	Threaded
Assembly position	Any
Pneumatic connection	G1/4
Product weight	138 g
Material housing	steel, galvanized
Material membrane	NBR
Threshold setting range	1 ... 10 bar
Protection class	IP65