

precision pressure regulator

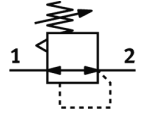
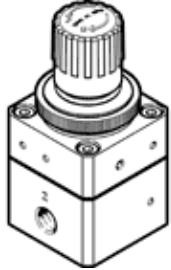
LRP-1/4-10

Part number: 159502

FESTO

Without pressure gauge.

Use a suitable precision pressure gauge Type MAP or Type FMAP with this product.



Data sheet

Feature	Value
Actuator lock	Rotary knob with lock
Assembly position	Any
Design structure	Piloted precision diaphragm regulator
Controller function	Output pressure constant with secondary exhaust
Pressure gauge	Prepared for G1/8
Operating pressure	1 ... 12 bar
Pressure regulation range	0.1 ... 10 bar
Max. pressure hysteresis	0.02 bar
Standard nominal flow rate	2,300 l/min
Operating medium	Compressed air in accordance with ISO8573-1:2010 [7:4:4] Inert gases
Note on operating and pilot medium	Lubricated operation not possible
Medium temperature	-10 ... 60 °C
Ambient temperature	-10 ... 60 °C
Product weight	310 g
Mounting type	Front panel installation Line installation with accessories
Pneumatic connection, port 1	G1/4
Pneumatic connection, port 2	G1/4
Materials note	Conforms to RoHS
Material seals	NBR
Material housing	Aluminium