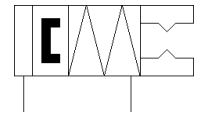
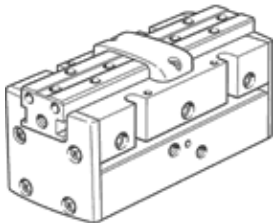


parallel gripper HGPP-12-A-G2

Part number: 187869

FESTO

Precise, for position sensing via hall effect sensor or inductive sensors.
With gripping force retention when closing...-G2.



Data sheet

| Feature | Value |
|-----------------------------------------|-----------------------------------------------------------------------------|
| Size | 12 |
| Stroke per gripper jaw | 2.5 mm |
| Max. replacement accuracy | 0.1 mm |
| Repetition accuracy, gripper | ≤ 0.02 mm |
| Number of gripper fingers | 2 |
| Mode of operation | double-acting |
| Gripper function | Parallel |
| Gripper force back-up | On closing |
| Design structure | Rack and pinion |
| Position detection | For Hall sensors For inductive sensors |
| Operating pressure | 5 ... 8 bar |
| Max. operating frequency of gripper | 4 Hz |
| Min. opening time at 6 bar | 37 ms |
| Min. closing time at 6 bar | 40 ms |
| Operating medium | Compressed air in accordance with ISO8573-1:2010 [7:4:4] |
| Note on operating and pilot medium | Lubricated operation possible (subsequently required for further operation) |
| Corrosion resistance classification CRC | 2 - Moderate corrosion stress |
| Ambient temperature | 5 ... 60 °C |
| Max. force on gripper jaw Fz static | 70 N |
| Max. torque at gripper Mx static | 3 Nm |
| Max. torque at gripper My static | 3 Nm |
| Max. torque at gripper Mz static | 3 Nm |
| Max. mass per external gripper finger | 100 g |
| Product weight | 173 g |
| Mounting type | with internal (female) thread |
| Pneumatic connection | M3 |
| Materials note | Free of copper and PTFE |
| Material cover cap | POM |
| Material housing | Wrought Aluminium alloy Hard anodised |
| Material gripper jaws | Wrought Aluminium alloy Nickel plated |