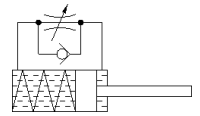
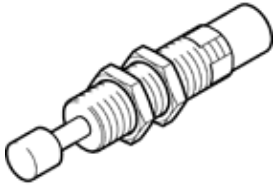


shock absorber YSRW-20-34

Part number: 191198

FESTO

Self-adjusting, with progressive characteristic curve.



Data sheet

Feature	Value
Size	20
Stroke	34 mm
Cushioning	self-adjusting Soft characteristic
Assembly position	Any
Position detection	No
Max. impact speed	3 m/s
Reset time short	0.3 s
Reset time long	1 s
Mode of operation	single-acting pushing action
Corrosion resistance classification CRC	2 - Moderate corrosion stress
Ambient temperature	-10 ... 80 °C
Cushioning length	34 mm
Max. stop force	3,000 N
Max. energy consumption per stroke	70 J
Max. energy consumption per hour	100,000 J
Max. residual energy	0.32 J
Reset force	10 N
Product weight	330 g
Mounting type	with lock nut
Materials note	Free of copper and PTFE Conforms to RoHS
Material seals	NBR
Material housing	Steel Galvanised
Material piston rod	High alloy steel