

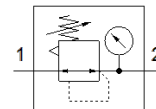
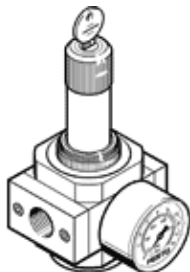
pressure regulator

LRS-1/4-D-MINI

Part number: 194610
Classic - do not use for new projects

FESTO

With lockable regulator head, working pressure up to 12 bar.
Modern alternatives can be found by entering the first four characters of the type code in the search field.



Data sheet

| Feature | Value |
|---|--|
| Size | Mini |
| Series | D |
| Actuator lock | Rotary knob with integrated lock |
| Assembly position | Any |
| Design structure | directly-controlled diaphragm regulator |
| Controller function | Output pressure constant with initial pressure compensation with secondary exhaust |
| Pressure gauge | with pressure gauge |
| Operating pressure | 1 ... 16 bar |
| Pressure regulation range | 0.5 ... 12 bar |
| Max. pressure hysteresis | 0.2 bar |
| Standard nominal flow rate | 1,500 l/min |
| Operating medium | Compressed air in accordance with ISO8573-1:2010 [7:4:4] Inert gases |
| Note on operating and pilot medium | Lubricated operation possible (subsequently required for further operation) |
| Corrosion resistance classification CRC | 2 - Moderate corrosion stress |
| Air purity class at output | Compressed air in accordance with ISO8573-1:2010 [7:4:4] Inert gases |
| Medium temperature | -10 ... 60 °C |
| Ambient temperature | -10 ... 60 °C |
| Product weight | 500 g |
| Mounting type | Front panel installation Line installation with accessories |
| Pneumatic connection, port 1 | G1/4 |
| Pneumatic connection, port 2 | G1/4 |
| Materials note | Conforms to RoHS |
| Material of connecting plate | Zinc die-casting |
| Material seals | NBR |
| Material housing | Zinc die-casting |