

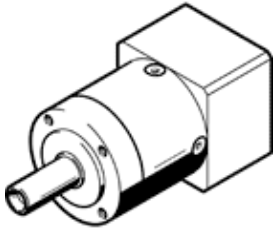
# gear unit EMGA-40-P-G5-EAS-40

Part number: 2297685

☆ Core product range

Suitable for servo motors.

FESTO



## Data sheet

Feature	Value
Gear unit flange size	40 mm
Motor flange size	40 mm
Torsional backlash	0.25 deg
Type of gear unit	Planetary gear unit
Gear unit ratio	5:1
Max. input speed	18,000 1/min
Operating temperature of gear unit	-25 ... 90 °C
Protection class	IP54
Continuous output torque	14 Nm
Mass moment of inertia of gear unit	0.019 kgcm <sup>2</sup>
Max. output torque	22 Nm
Max. efficiency	98 %
Torsional resistance	1 Nm/arcmin
Product weight	350 g
Gear unit interface, output shaft	40G
Gear unit interface, drive shaft	40P
Materials note	Conforms to RoHS