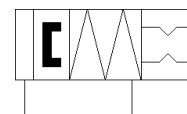
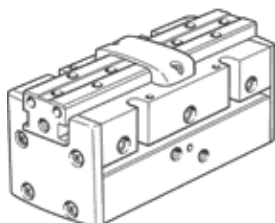


# parallel gripper HGPP-25-A-G2

Part number: 525663

FESTO

Precise, for position sensing via hall effect sensor or inductive sensors.  
With gripping force retention when closing...-G2.



## Data sheet

Feature	Value
Size	25
Stroke per gripper jaw	10 mm
Max. replacement accuracy	0.1 mm
Repetition accuracy, gripper	≤ 0.02 mm
Number of gripper fingers	2
Mode of operation	double-acting
Gripper function	Parallel
Gripper force back-up	On closing
Design structure	Rack and pinion
Position detection	For Hall sensors For inductive sensors
Operating pressure	5 ... 8 bar
Max. operating frequency of gripper	4 Hz
Min. opening time at 6 bar	105 ms
Min. closing time at 6 bar	90 ms
Operating medium	Compressed air in accordance with ISO8573-1:2010 [7:4:4]
Note on operating and pilot medium	Lubricated operation possible (subsequently required for further operation)
Corrosion resistance classification CRC	2 - Moderate corrosion stress
Ambient temperature	5 ... 60 °C
Max. force on gripper jaw Fz static	380 N
Max. torque at gripper Mx static	21 Nm
Max. torque at gripper My static	21 Nm
Max. torque at gripper Mz static	21 Nm
Max. mass per external gripper finger	250 g
Product weight	898 g
Mounting type	with internal (female) thread
Pneumatic connection	M5
Materials note	Free of copper and PTFE
Material cover cap	POM
Material housing	Wrought Aluminium alloy Hard anodised
Material gripper jaws	Wrought Aluminium alloy Nickel plated