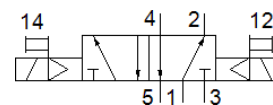
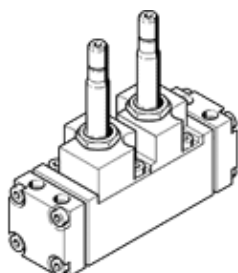


solenoid valve CJM-5/2-1/4-CH

Part number: 5955

FESTO

With plug socket and manual override, without sub-base



Data sheet

Feature	Value
Valve function	5/2 bistable
Type of actuation	electrical
Standard nominal flow rate	1,400 l/min
Operating pressure	1.5 ... 10 bar
Nominal size	6.5 mm
Assembly position	Any
Manual override	Pushing
Type of piloting	Piloted
Flow direction	non reversible
Max. switching frequency	40 Hz
Switching time on	28 ms
Operating medium	Compressed air in accordance with ISO8573-1:2010 [7:4:4]
Note on operating and pilot medium	Lubricated operation possible (subsequently required for further operation)
Medium temperature	-10 ... 60 °C
Mounting type	On sub-base
Pilot air port 12	G1/8
Pilot air port 14	G1/8
Pneumatic connection, port 1	G1/4
Pneumatic connection, port 2	G1/4
Pneumatic connection, port 3	G1/4
Pneumatic connection, port 4	G1/4
Pneumatic connection, port 5	G1/4
Materials note	Contains PWIS substances
Material seals	NBR
Material housing	Wrought Aluminium alloy
Material membrane	PUR