

# stem actuated valve

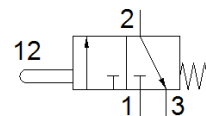
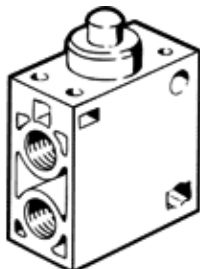
## V-3-1/4-B

Part number: 6808

**FESTO**

Normally closed.

This type is suitable for vacuum. Vacuum connection at port 1 (P).



## Data sheet

Feature	Value
Valve function	3/2 closed, monostable
Type of actuation	mechanical
Standard nominal flow rate	600 l/min
Operating pressure	-0.95 ... 10 bar
Design structure	Poppet seat
Nominal size	7 mm
Type of piloting	direct
Ambient temperature	-10 ... 60 °C
Actuating force	70 N
Product weight	130 g
Mounting type	with through hole
Pneumatic connection, port 1	G1/4
Pneumatic connection, port 2	G1/4
Pneumatic connection, port 3	G1/4
Material seals	NBR
Material housing	Aluminium die cast