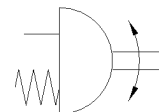
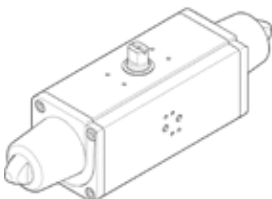


semi-rotary drive DAPS-0120-090-RS4-F0710-T4

Part number: 8030619

FESTO

single-acting, air connection to VDI/VDE 3845 Namur valves, direct flange mounting, high-temperature version.



Data sheet

Feature	Value
Size of actuator	0120
Flange hole pattern	F07 F10
Swivel angle	90 deg
End-position adjustment range at 0°	-1 ... 9 deg
End-position adjustment range at 90°	81 ... 91 deg
Shaft connection depth	24.8 mm
Note regarding end position setting range	One selectable end position is adjustable
Fitting connection conforms to standard	ISO 5211
Cushioning	No cushioning
Assembly position	Any
Mode of operation	single-acting
Design structure	Yoke kinematics
Position detection	No
Closing direction	right-closing
Valve connection conforms to standard	VDI/VDE 3845 (NAMUR)
Safety Integrity Level (SIL)	Product can be used in SRP/CS up to SIL 2 (high demand) Product can be used in SRP/CS up to SIL 2 low demand
Supply pressure for spring strength	5.6 bar
Operating pressure	5.6 ... 8.4 bar
CE mark (see declaration of conformity)	to EU directive explosion protection (ATEX)
ATEX category Gas	II 2G
ATEX category Dust	II 2D
Explosion ignition protection type Gas	Ex h IIC T6...T3 Gb X
Explosion ignition protection type Dust	Ex h IIIC T85°C...T200°C Db X
Explosion-proof ambient temperature	-20°C ≤ Ta ≤ +150°C
Operating medium	Compressed air in accordance with ISO8573-1:2010 [7:4:4]
Note on operating and pilot medium	Lubricated operation possible (subsequently required for further operation)
Corrosion resistance classification CRC	3 - High corrosion stress
Ambient temperature	-20 ... 150 °C
Torque at rated operating pressure and 0° rotation angle	120 Nm
Torque at nominal operating pressure with 50° swivel angle	60 Nm
Torque at nominal operating pressure with 90° swivel angle	80 Nm
Note about the torque	The operating torque of the actuator must not be higher than the maximum permissible torque listed in ISO 5211, with reference to the size of the mounting flange and of the coupling.
Spring return torque with 0° swivel angle	80 Nm
Spring return torque with 50° swivel angle	60 Nm
Spring return torque at 90°	120 Nm
Spring strength	4
Air consumption at 6 bar per cycle 0°-90°-0°	5.6 l
Product weight	6,800 g
Shaft connection	T22

Feature	Value
Pneumatic connection	G1/8
Materials note	Contains PWIS substances Conforms to RoHS
Material cover	Wrought Aluminium alloy
Material seals	FPM PTFE reinforced
Material housing	Wrought Aluminium alloy
Material screws	High alloy steel
Material shaft	High alloy steel
Material number for shaft	1.4305