

Gear units EMGA/EMGC

FESTO



Festo core product range
Covers 80% of your automation tasks

Worldwide:

Always in stock

Superb:

Festo quality at an attractive price

Easy:

Simplified procurement and warehousing

★ Generally ready for shipping ex works in 24 hours

In stock at 13 Service Centres worldwide

More than 2200 products

★ Generally ready for shipping ex works in 5 days

Assembled for you at 4 Service Centres worldwide

Up to 6×10^{12} variants per product family

Just look
for the
star!

Key features

EMGA-...P-...

→ Page 3

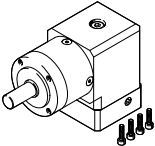


- Planetary gear, straight
- Gear ratio $i = 3; 5$
- Life-time lubrication
- Degree of protection: IP54

For servo motor EMME-AS, EMMS-AS, EMMT-AS
For stepper motor EMMS-ST

EMGA-...A-...

→ Page 9



- Right-angle gear unit
- Gear ratio $i = 3; 5$
- Life-time lubrication
- Degree of protection: IP54

For servo motor EMME-AS, EMMT-AS

EMGC-...P-...SEC

→ Page 12

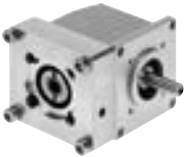


- Planetary gear, straight
- Single-stage or two-stage
- Gear ratio $i = 3; 4; 5; 7; 12; 16; 20; 25; 35; 40$
- Life-time lubrication
- Degree of protection: IP54

For integrated drive EMCA


EMGC-...A-...SEC

→ Page 17



- Right-angle gear unit
- Gear ratio $i = 1$
- Life-time lubrication
- Degree of protection: IP54

For integrated drive EMCA

 **Note**

Other ratios and versions on request

Type codes

001	Series	
EMGA	Gear unit	

002	Gear unit flange size	
40	40	
60	60	
80	80	
120	120	
160	160	

003	Gear unit type	
P	Planetary gear unit	
A	Right-angle gear unit	

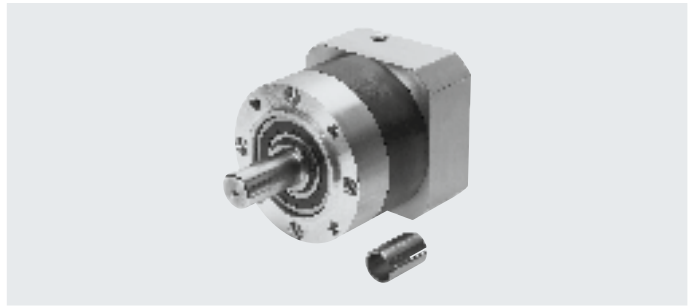
004	Gear ratio	
G3	3:1	
G5	5:1	

005	Interface	
EAS	Eco AC synchronous	
SAS	AC synchronous	
SST	Stepper motor	

006	Flange size, motors	
40	40	
42	42	
55	55	
57	57	
60	60	
70	70	
80	80	
87	87	
100	100	
140	140	

Data sheet

- For servo motor:
EMME-AS, EMMS-AS, EMMT-AS
- For stepper motor:
EMMS-ST



Technical data							
Gear unit size	[mm]	ø 40		ø 60		ø 60	
Gear ratio	[i]	3	5	3	5	3	5
Output interface		40G		60H		60G	
Motor interface		EAS-40, SAS-40		EAS-60		SAS-55, SAS-70, SST-57	
Gear unit type		Planetary gear					
		Single-stage					
Continuous output torque ¹⁾	[Nm]	11	14	28	40	22	
Max. output torque ²⁾	[Nm]	17.6	22	45	64	35.2	
Max. drive speed	[rpm]	18000		13000		13000	
Torsional rigidity	[Nm/arcmin]	1		2.3		2.3	
Torsional backlash	[deg]	0.25		0.17		0.17	
Mass moment of inertia ³⁾	[kgcm ²]	0.031	0.019	0.135	0.078	0.135	0.078
Max. efficiency	[%]	98					
Operating temperature ⁴⁾	[°C]	-25 ... +90					
Degree of protection		IP54					
Product weight	[g]	350		900		900	
Note on materials		RoHS-compliant					
Gear unit size	[mm]	ø 80		ø 120		ø 160	
Gear ratio	[i]	3	5	3	5	3	5
Output interface		80G		120G		160G	
Motor interface		EAS-80, SAS-70, SAS-100, SST-87		SAS-100, SAS-140		SAS-140	
Gear unit type		Planetary gear					
		Single-stage					
Continuous output torque ¹⁾	[Nm]	85	110	115	195	400	450
Max. output torque ²⁾	[Nm]	136	176	184	312	640	720
Max. drive speed	[rpm]	7000		6500		6500	
Torsional rigidity	[Nm/arcmin]	6		12		38	
Torsional backlash	[deg]	0.12		0.12		0.1	
Mass moment of inertia ³⁾	[kgcm ²]	0.77	0.45	2.63	1.53	12.14	6.07
Max. efficiency	[%]	98					
Operating temperature ⁴⁾	[°C]	-25 ... +90					
Degree of protection		IP54		IP54			
Product weight	[g]	2100		6000		18000	
Note on materials		RoHS-compliant					

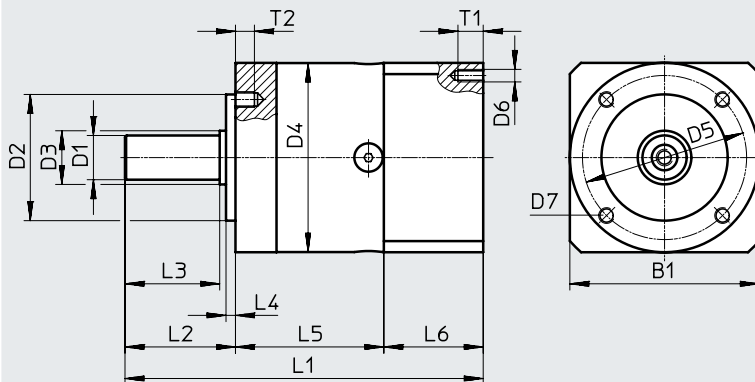
- 1) At the output shaft
- 2) The specifications refer to an output shaft speed of 100 rpm as well as operating mode S1 and a temperature of 30 °C
- 3) In relation to the drive shaft
- 4) Note the temperature range of the motor

Data sheet

Dimensions

Download CAD data → www.festo.com

EMGA-... for servo motors EMME-AS, EMMT-AS



Type	Interface		B1	D1 ∅ H7	D2 ∅ H7	D3 ∅	D4 ∅	D5 ∅	D6
	Output	Motor							
EMGA-40-P-G...-EAS-40	40G	EAS-40	40	10	26	12	40	34	M3
EMGA-60-P-G...-EAS-60	60H	EAS-60	60	14	40	17	60	52	M4
EMGA-80-P-G...-EAS-80	80G	EAS-80	80	20	60	25	80	70	M5
EMGA-80-P-G...-SAS-100	80G	SAS-100	100	20	60	25	80	70	M8
EMGA-120-P-G...-SAS-100	120G	SAS-100	115	25	80	35	115	100	M8

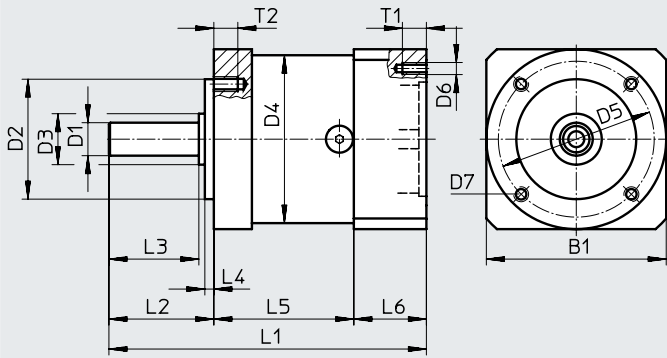
Type	D7	L1	L2	L3 ±0.2	L4 ±0.2	L5	L6	T1	T2
EMGA-40-P-G...-EAS-40	M4	93.5	26	23	2	39	28.5	8	6
EMGA-60-P-G...-EAS-60	M5	113.5	35	30	3	47	31	10	8
EMGA-80-P-G...-EAS-80	M6	138.5	40	36	3	60	38.5	12	10
EMGA-80-P-G...-SAS-100	M6	143.5	40	36	3	60	43.5	16	10
EMGA-120-P-G...-SAS-100	M10	176.5	55	50	4	74	47.5	20	16

Data sheet

Dimensions

Download CAD data → www.festo.com

EMGA-... for servo motors EMMS-AS



Type	Interface		B1	D1 ø H7	D2 ø H7	D3 ø	D4 ø	D5 ø	D6
	Output	Motor							
EMGA-40-P-G...-SAS-40	40G	SAS-40	40	10	26	12	40	34	M3
EMGA-60-P-G...-SAS-55	60G	SAS-55	60	11	40	17	60	52	M5
EMGA-60-P-G...-SAS-70	60G	SAS-70	70	11	40	17	60	52	M5
EMGA-80-P-G...-SAS-70	80G	SAS-70	80	20	60	25	80	70	M5
EMGA-80-P-G...-SAS-100	80G	SAS-100	100	20	60	25	80	70	M8
EMGA-120-P-G...-SAS-100	120G	SAS-100	115	25	80	35	115	100	M8
EMGA-120-P-G...-SAS-140	120G	SAS-140	140	25	80	35	115	100	M10
EMGA-160-P-G...-SAS-140	160G	SAS-140	140	40	130	55	160	145	M10

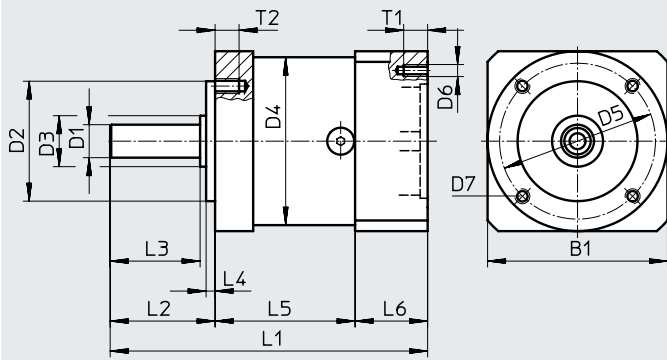
Type	D7	L1	L2	L3 ±0.2	L4 ±0.2	L5	L6	T1	T2
EMGA-40-P-G...-SAS-40	M4	88.5±1.5	26±0.6	23	2	39	23.5	6	6
EMGA-60-P-G...-SAS-55	M5	106±1.5	35±0.8	30	3	47	24	12	8
EMGA-60-P-G...-SAS-70	M5	106±1.5	35±0.8	30	3	47	24	12	8
EMGA-80-P-G...-SAS-70	M6	133.5±1.5	40±0.8	36	3	60	33.5	12	10
EMGA-80-P-G...-SAS-100	M6	143.5±1.5	40±0.8	36	3	60	43.5	16	10
EMGA-120-P-G...-SAS-100	M10	176.5±2	55±0.8	50	4	74	47.5	20	16
EMGA-120-P-G...-SAS-140	M10	186±2	55±0.8	50	4	74	57.5	25	16
EMGA-160-P-G...-SAS-140	M12	255.5±2	87±0.8	80	5	104	64.5	25	20

Data sheet

Dimensions

Download CAD data → www.festo.com

EMGA-... for stepper motors EMMS-ST



Type	Interface		B1	D1 ∅ H7	D2 ∅ H7	D3 ∅	D4 ∅	D5 ∅	D6
	Output	Motor							
EMGA-40-P-G...-SST-42	40G	SST-42	40	10	26	12	40	34	∅3.4
EMGA-60-P-G...-SST-57	60G	SST-57	60	11	40	17	60	52	M4
EMGA-80-P-G...-SST-87	80G	SST-87	90	20	60	25	80	70	M5

Type	D7	L1	L2	L3	L4	L5	L6	T1	T2
		±1.5		±0.2	±0.2				
EMGA-40-P-G...-SST-42	M4	92.5	26±0.6	23	2	39	27.5	5	6
EMGA-60-P-G...-SST-57	M5	106	35±0.8	30	3	47	24	8	8
EMGA-80-P-G...-SST-87	M6	135.5	40±0.8	36	3	60	35.5	12	10

Data sheet

Ordering data	Gear ratio	Interface		Part no.	Type
		Output	Motor		
For servo motor					
EMME-AS-40	3	40G	EAS-40	★ 2297684	EMGA-40-P-G3-EAS-40
	5	40G	EAS-40	★ 2297685	EMGA-40-P-G5-EAS-40
EMME-AS-60, EMMT-AS-60,	3	60H	EAS-60	★ 2297686	EMGA-60-P-G3-EAS-60
	5	60H	EAS-60	★ 2297687	EMGA-60-P-G5-EAS-60
EMME-AS-80	3	80G	EAS-80	★ 2297690	EMGA-80-P-G3-EAS-80
	5	80G	EAS-80	★ 2297691	EMGA-80-P-G5-EAS-80
EMMS-AS-40	3	40G	SAS-40	552186	EMGA-40-P-G3-SAS-40
	5	40G	SAS-40	552187	EMGA-40-P-G5-SAS-40
EMMS-AS-55	3	60G	SAS-55	552188	EMGA-60-P-G3-SAS-55
	5	60G	SAS-55	552189	EMGA-60-P-G5-SAS-55
EMMS-AS-70	3	60G	SAS-70	552190	EMGA-60-P-G3-SAS-70
	5	60G	SAS-70	552191	EMGA-60-P-G5-SAS-70
EMMS-AS-70	3	80G	SAS-70	552192	EMGA-80-P-G3-SAS-70
	5	80G	SAS-70	552193	EMGA-80-P-G5-SAS-70
EMME-AS-100, EMMS-AS-100	3	80G	SAS-100	★ 552194	EMGA-80-P-G3-SAS-100
	5	80G	SAS-100	★ 552195	EMGA-80-P-G5-SAS-100
	3	120G	SAS-100	★ 552196	EMGA-120-P-G3-SAS-100
	5	120G	SAS-100	★ 552197	EMGA-120-P-G5-SAS-100
EMMS-AS-140	3	120G	SAS-140	552198	EMGA-120-P-G3-SAS-140
	5	120G	SAS-140	552199	EMGA-120-P-G5-SAS-140
	3	160G	SAS-140	552200	EMGA-160-P-G3-SAS-140
	5	160G	SAS-140	552201	EMGA-160-P-G5-SAS-140
For stepper motor					
EMMS-ST-42	3	40G	SST-42	★ 549428	EMGA-40-P-G3-SST-42
	5	40G	SST-42	★ 549429	EMGA-40-P-G5-SST-42
EMMS-ST-57	3	60G	SST-57	★ 549430	EMGA-60-P-G3-SST-57
	5	60G	SST-57	★ 549431	EMGA-60-P-G5-SST-57
EMMS-ST-87	3	80G	SST-87	★ 549432	EMGA-80-P-G3-SST-87
	5	80G	SST-87	★ 549433	EMGA-80-P-G5-SST-87

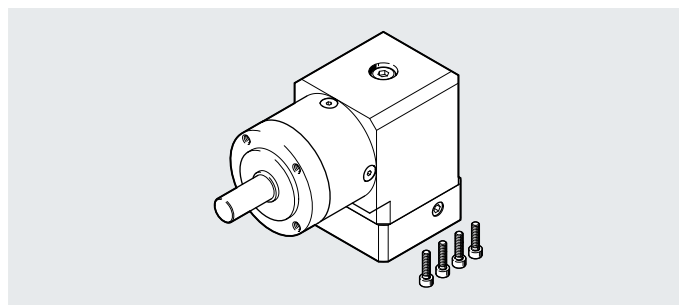
Festo core product range



Generally ready for shipping ex works in 24 hours
 Generally ready for shipping ex works in 5 days

Data sheet

- For servo motor:
EMME-AS, EMMT-AS



Technical data					
Gear unit size	[mm]	∅ 40		∅ 60	
Gear ratio	[i]	3	5	3	5
Output interface		40G		60H	
Motor interface		40P		60P	
Gear unit type		Right-angle gear unit			
		Single-stage			
Continuous output torque ¹⁾	[Nm]	4.5	7.5	14	24
Max. output torque ²⁾	[Nm]	7	12	22	38
Max. drive speed	[rpm]	18000		13000	
Torsional rigidity	[Nm/arcmin]	0.8		2	1.9
Torsional backlash	[deg]	0.35		0.27	
Mass moment of inertia ³⁾	[kgcm ²]	0.049	0.035	0.394	0.257
Max. efficiency	[%]	95			
Operating temperature ⁴⁾	[°C]	-25 ... +90			
Degree of protection		IP54			
Product weight	[g]	500		1700	
Note on materials		RoHS-compliant			

Gear unit size	[mm]	∅ 80			
Gear ratio	[i]	3		5	
Output interface		80G			
Motor interface		80P, 100A			
Gear unit type		Right-angle gear unit			
		Single-stage			
Continuous output torque ¹⁾	[Nm]	40		67	
Max. output torque ²⁾	[Nm]	64		107	
Max. drive speed	[rpm]	3500		3600	
Torsional rigidity	[Nm/arcmin]	5		4.8	
Torsional backlash	[deg]	0.22			
Mass moment of inertia ³⁾	[kgcm ²]	1.409		1.017	
Max. efficiency	[%]	95			
Operating temperature ⁴⁾	[°C]	-25 ... +90			
Degree of protection		IP54			
Product weight	[g]	4300			
Note on materials		RoHS-compliant			

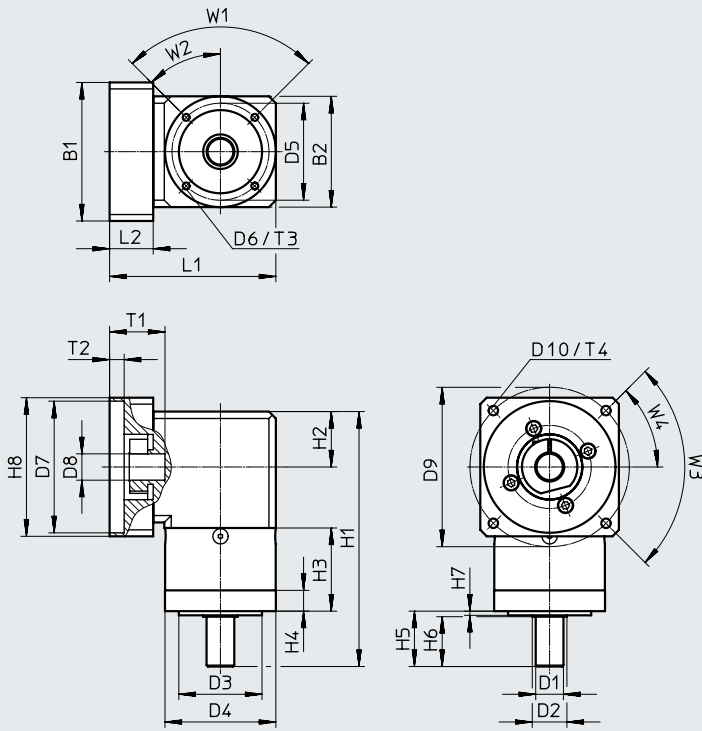
- At the output shaft
- The specifications refer to an output shaft speed of 100 rpm as well as operating mode S1 and a temperature of 30 °C
- In relation to the drive shaft
- Note the temperature range of the motor

Data sheet

Dimensions

Download CAD data → www.festo.com

EMGA-... for servo motors EMME-AS, EMMT-AS



Type	Interface		B1	B2	D1 ∅ H7	D2 ∅	D3 ∅ H7	D4 ∅
	Output	Motor						
EMGA-40-A-G...-40P	40G	40P	40	40	10	12	26	40 -0.3
EMGA-60-A-G...-60P	60H	60P	60	60	14	17	40	60 -0.3
EMGA-80-A-G...-80P	80G	80P	80	80	20	25	60	80 -0.4
EMGA-80-A-G...-100A	80G	100 A	100	100	20	25	60	80 -0.4

Type	D5 ∅	D6	D7 +0.05/+0.02	D8	D9	D10	H1 ±1.5	H2
EMGA-40-A-G...-40P	34	M4	30	8	45	M3	110	20+0.5/-0.7
EMGA-60-A-G...-60P	52	M5	50	14	70	M4	146.8	30
EMGA-80-A-G...-80P	70	M6	70	19	90	M5	183.9	40
EMGA-80-A-G...-100A	70	M6	95	19	115	M6	183.9	40

Type	H3 ±0.2	H4	H5	H6 ±0.2	H7 ±0.2	H8	L1	L2
EMGA-40-A-G...-40P	39	10.2	26±0.6	23	2	40	67	19
EMGA-60-A-G...-60P	46.8	12.7	35±0.8	30	3	60	92.5	23
EMGA-80-A-G...-80P	59.9	15	40±0.8	36	3	80	110	21.5
EMGA-80-A-G...-100A	59.9	15	40±0.8	36	3	100	120	31.5

Type	T1	T2	T3	T4	W1	W2	W3	W4
EMGA-40-A-G...-40P	25+2.5/+0.5	3.5	6	8	90°	45°	90°	45°
EMGA-60-A-G...-60P	30+2/+0.5	4	8	10	90°	45°	90°	45°
EMGA-80-A-G...-80P	30+2/+0.5	4.4	10	12	90°	45°	90°	45°
EMGA-80-A-G...-100A	40+2/+0.5	10.4	10	20	90°	45°	90°	45°

Data sheet

Ordering data	Gear ratio	Interface		Part no.	Type
		Output	Motor		
For servo motor					
EMME-AS-40	3	40G	40P	8085342	EMGA-40-A-G3-40P
	5	40G	40P	8085343	EMGA-40-A-G5-40P
EMME-AS-60, EMMT-AS-60	3	60H	60P	8085344	EMGA-60-A-G3-60P
	5	60H	60P	8085345	EMGA-60-A-G5-60P
EMME-AS-80	3	80G	80P	8085346	EMGA-80-A-G3-80P
	5	80G	80P	8085347	EMGA-80-A-G5-80P
EMME-AS-100, EMMS-AS-100	3	80G	100 A	8085348	EMGA-80-A-G3-100A
	5	80G	100 A	8085349	EMGA-80-A-G5-100A

Type codes

001	Series
EMGC	Gear unit

002	Gear unit flange size
40	40
60	60
67	67

003	Gear unit characteristic
	Standard

004	Gear unit type
A	Right-angle gear unit
P	Planetary gear unit

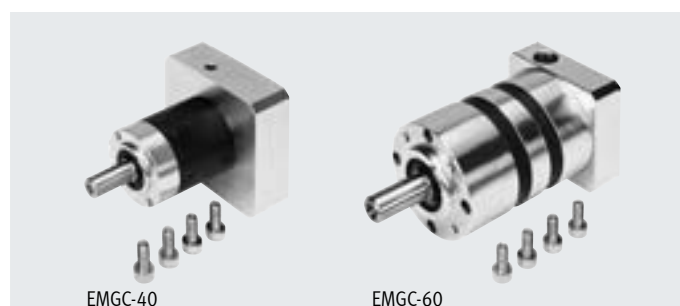
005	Gear ratio
G1	1:1
G3	3:1
G4	4:1
G5	5:1
G7	7:1
G10	10:1
G12	12:1
G16	16:1
G20	20:1
G25	25:1
G35	35:1
G40	40:1

006	Interface
SEC	EC motor

007	Flange size, motors
67	67

Data sheet

- For integrated drive:
EMCA-EC-67



Technical data											
Gear unit size	[mm]	ø 40									
Gear ratio	[i]	3	4	5	7	12	16	20	25	35	
Output interface		40G									
Motor interface		SEC-67									
Gear unit type		Planetary gear									
		Single-stage					Two-stage				
Continuous output torque ¹⁾	[Nm]	5	6.5	6.5	6.5	10	14	14	14	14	
Max. output torque ²⁾	[Nm]	10	13	13	13	12.5	17.5	17.5	17.5	17.5	
Max. drive speed ³⁾	[rpm]	6000									
Torsional rigidity	[Nm/arcmin]	0.85	0.85	0.85	0.65	0.85					
Max. torsional backlash	[deg]	0.5					0.67				
Mass moment of inertia ⁴⁾	[kgcm ²]	0.06	0.04	0.04	0.04	0.04					
Max. efficiency	[%]	94					92				
Operating temperature ⁵⁾	[°C]	-20 ... +90									
Degree of protection		IP54									
Product weight	[g]	450					550				
Note on materials		RoHS-compliant									
		Contains paint-wetting impairment substances									

- 1) At the output shaft
- 2) In relation to a rotational speed of 3000 rpm and operating mode S1
- 3) The permissible operating temperature may not be exceeded
- 4) In relation to the drive shaft
- 5) Note the temperature range of the motor

Technical data													
Gear unit size	[mm]	ø 60											
Gear ratio	[i]	3	4	5	7	10	12	16	20	25	35	40	
Output interface		60H											
Motor interface		SEC-67											
Gear unit type		Planetary gear											
		Single-stage						Two-stage					
Continuous output torque ¹⁾	[Nm]	20	26	26	26	16	36	42	42	44	44	42	
Max. output torque ²⁾	[Nm]	36	44	44	44	24	45	52	52	55	55	52	
Max. drive speed ³⁾	[rpm]	6000											
Torsional rigidity	[Nm/arcmin]	2.4	2.4	2.4	1.7	1.3	2.4						
Max. torsional backlash	[deg]	0.5						0.67					
Mass moment of inertia ⁴⁾	[kgcm ²]	0.4	0.34	0.32	0.3	0.29	0.34	0.34	0.32	0.32	0.3	0.29	
Max. efficiency	[%]	94						92					
Operating temperature ⁵⁾	[°C]	-20 ... +90											
Degree of protection		IP54											
Product weight	[g]	900						1200					
Note on materials		RoHS-compliant											
		Contains paint-wetting impairment substances											

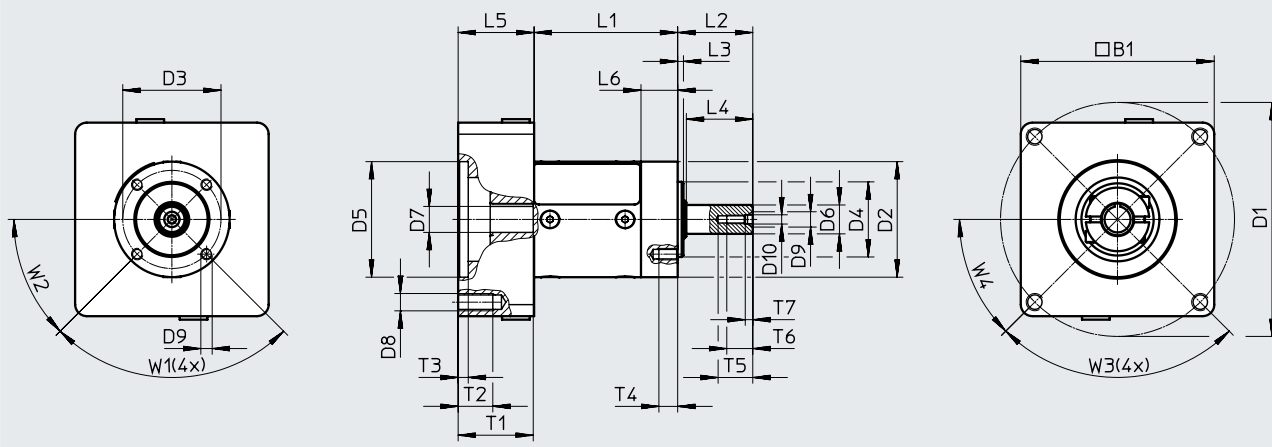
- 1) At the output shaft
- 2) In relation to a rotational speed of 3000 rpm and operating mode S1
- 3) The permissible operating temperature may not be exceeded
- 4) In relation to the drive shaft
- 5) Note the temperature range of the motor

Data sheet

Dimensions

Download CAD data → www.festo.com

EMGC-40-P-... for integrated drives EMCA-EC-67



Type	Interface		B1	D1 ∅	D2 ∅ -0.1	D3 ∅ ±0.1	D4 ∅ H6	D5 ∅ G7	D6 ∅ H7	D7 ∅ G6
	Output	Motor								
EMGC-40-P-...-SEC-67	40G	SEC-67	67	81	40	34	26	40	10	9

Type	D8	D9	D10 ∅	D11 ∅	L2 -0.3	L3	L4 -0.1	L5	L6	T1 min.
EMGC-40-P-...-SEC-67	M6	M4	5.3	3.2	26	2	23	26.3	12.7	26

Type	T2 min.	T3 +0.5	T4 min.	T5 min.	T6 min.	T7	W1	W2	W3	W4
EMGC-40-P-...-SEC-67	13	3.5	6.5	12	9	2.6	90°	45°	90°	45°

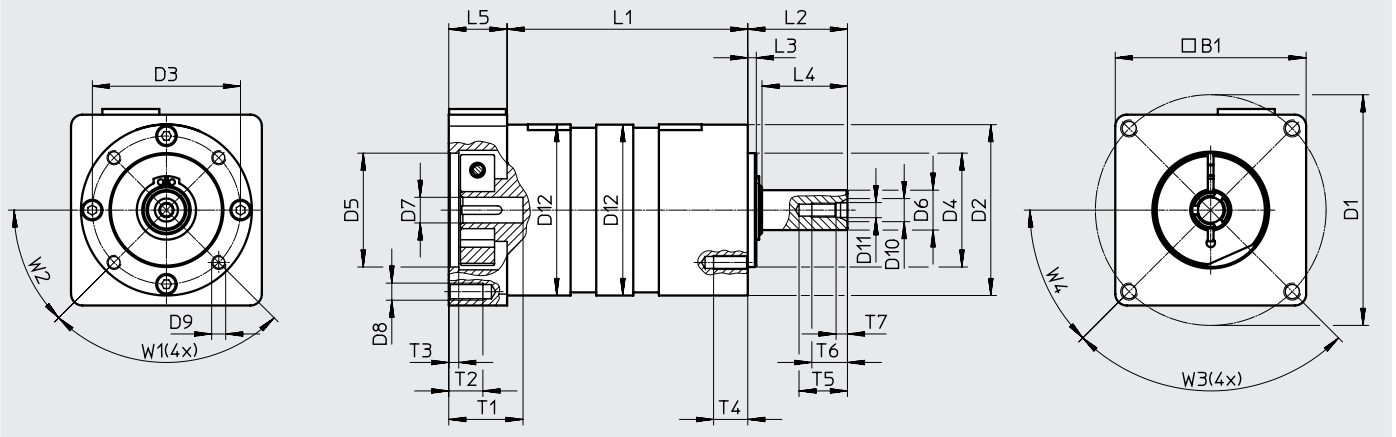
Type	L1 ±0.5
EMGC-40-P-G3-SEC-67	49.7
EMGC-40-P-G4-SEC-67	
EMGC-40-P-G5-SEC-67	
EMGC-40-P-G7-SEC-67	
EMGC-40-P-G12-SEC-67	65.3
EMGC-40-P-G16-SEC-67	
EMGC-40-P-G20-SEC-67	
EMGC-40-P-G25-SEC-67	
EMGC-40-P-G35-SEC-67	

Data sheet

Dimensions

Download CAD data → www.festo.com

EMGC-60-P... for integrated drives EMCA-EC-67



Type	Interface		B1	D1 ∅	D2 ∅ -0.1	D3	D4 ∅ H6	D5 ∅ G7	D6 ∅ H6
	Output	Motor							
EMGC-60-P...-SEC-67	60H	SEC-67	67	81	60	52	40	40	14

Type	D7 ∅ G6	D8	D9	D10 ∅	D11 ∅	D12 ∅ +0.1	L2 -0.3	L3	L4 -0.1	L5
EMGC-60-P...-SEC-67	9	M6	M5	8.1	5.3	60	35	3	30	20.5

Type	T1 min.	T2 min.	T3 +0.5	T4 min.	T5 min.	T6 min.	T7 +1	W1 90°	W2 45°	W3 90°	W4 45°
EMGC-60-P...-SEC-67	26	13	3.5	12	17	12.5	4	90°	45°	90°	45°

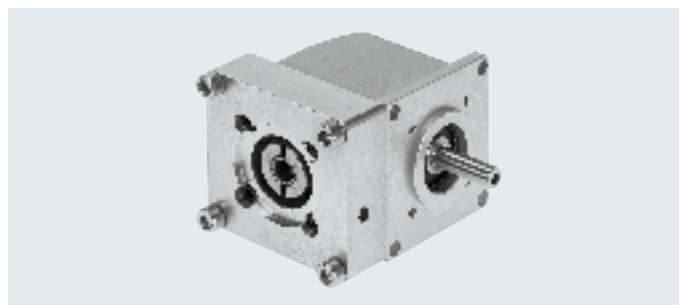
Type	L1 ±0.5
EMGC-60-P-G3-SEC-67	62.5
EMGC-60-P-G4-SEC-67	
EMGC-60-P-G5-SEC-67	
EMGC-60-P-G7-SEC-67	
EMGC-60-P-G10-SEC-67	84.5
EMGC-60-P-G12-SEC-67	
EMGC-60-P-G16-SEC-67	
EMGC-60-P-G20-SEC-67	
EMGC-60-P-G25-SEC-67	
EMGC-60-P-G35-SEC-67	
EMGC-60-P-G40-SEC-67	

Data sheet

Ordering data For integrated drive	Gear ratio		Interface		Part no.	Type			
			Output	Motor					
EMCA-EC-67	3	Single-stage	40G	SEC-67	8000594	EMGC-40-P-G3-SEC-67			
	4				8000595	EMGC-40-P-G4-SEC-67			
	5				8000596	EMGC-40-P-G5-SEC-67			
	7				8000597	EMGC-40-P-G7-SEC-67			
	12	Two-stage	40G	SEC-67	8000598	EMGC-40-P-G12-SEC-67			
	16				8000599	EMGC-40-P-G16-SEC-67			
	20				8000600	EMGC-40-P-G20-SEC-67			
	25				8000601	EMGC-40-P-G25-SEC-67			
	35				8000602	EMGC-40-P-G35-SEC-67			
EMCA-EC-67	3	Single-stage	60H	SEC-67	8000612	EMGC-60-P-G3-SEC-67			
	4				8000613	EMGC-60-P-G4-SEC-67			
	5				8000614	EMGC-60-P-G5-SEC-67			
	7				8000615	EMGC-60-P-G7-SEC-67			
	10				8000616	EMGC-60-P-G10-SEC-67			
	12	Two-stage	60H	SEC-67	8000617	EMGC-60-P-G12-SEC-67			
	16				8000618	EMGC-60-P-G16-SEC-67			
	20				8000619	EMGC-60-P-G20-SEC-67			
	25				8000620	EMGC-60-P-G25-SEC-67			
	35				8000621	EMGC-60-P-G35-SEC-67			
	40				8000622	EMGC-60-P-G40-SEC-67			

Data sheet

- For integrated drive:
EMCA-EC-67



Technical data		
Gear unit size	[mm]	67
Gear ratio	[i]	1
Output interface		67A
Motor interface		SEC-67
Gear unit type		Right-angle gear unit Single-stage
Continuous output torque ¹⁾	[Nm]	2
Max. output torque ²⁾	[Nm]	2.1
Max. drive speed ³⁾	[rpm]	4500
Torsional rigidity	[Nm/arcmin]	0.105
Max. torsional backlash	[deg]	0.67
Mass moment of inertia ⁴⁾	[kgcm ²]	0.09
Max. efficiency	[%]	90
Operating temperature ⁵⁾	[°C]	-20 ... +90
Degree of protection		IP54
Product weight	[g]	930
Note on materials		RoHS-compliant Contains paint-wetting impairment substances

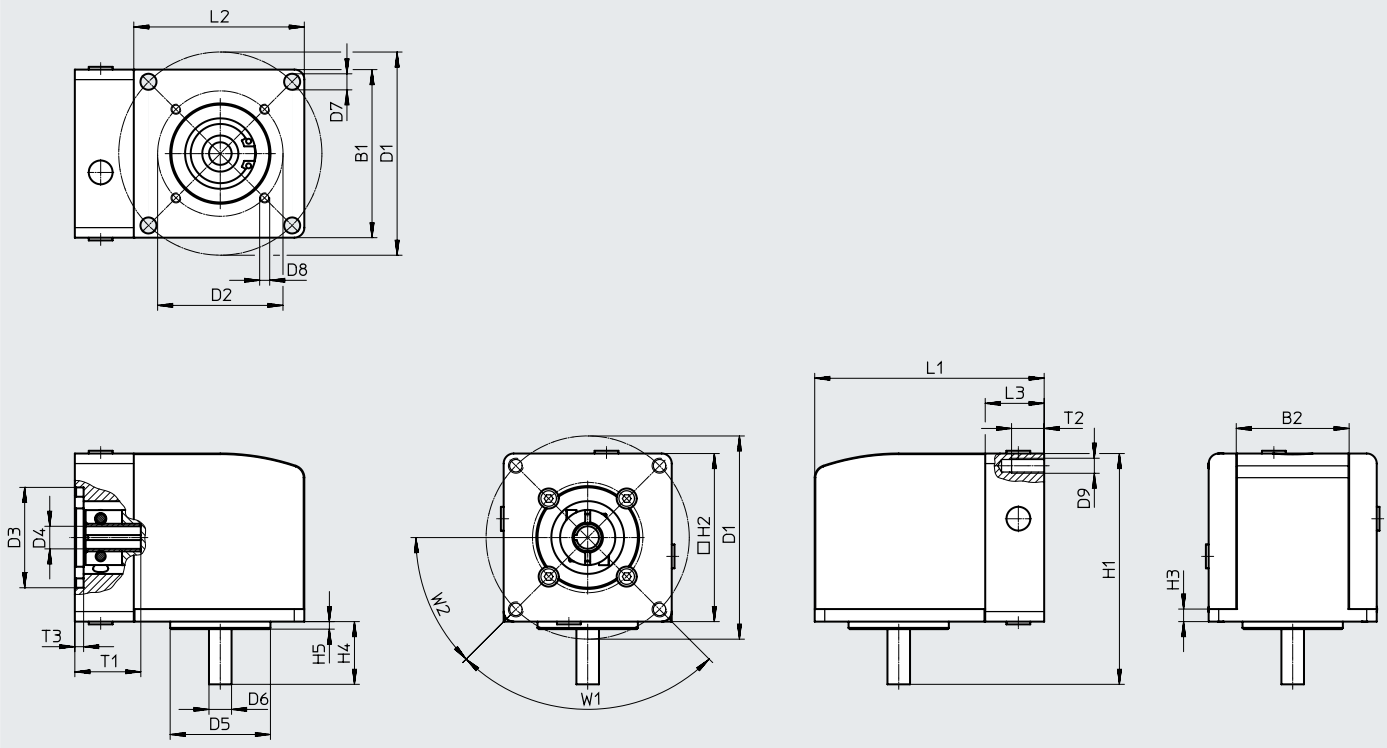
- At the output shaft
- In relation to a rotational speed of 3000 rpm and operating mode S1
- The permissible operating temperature may not be exceeded
- In relation to the drive shaft
- Note the temperature range of the motor

Data sheet

Dimensions

Download CAD data → www.festo.com

EMGC-67-... for integrated drives EMCA-EC-67



Type	Interface		B1	B2	D1	D2	D3	D4
	Output	Motor						
EMGC-67-A-G1-SEC-67	67 A	SEC-67	67	45 ±0.2	81 ±0.1	50 ±0.1	40 ∅	9 ∅

Type	D5	D6	D7	D8	D9	H1	H2	H3	H4
EMGC-67-A-G1-SEC-67	40 ∅	9 ∅	6.4 ∅	M4	M6	92	67	5 ±0.1	25 -0.1

Type	H5	L1	L2	L3	T1	T2	T3	W1	W2
EMGC-67-A-G1-SEC-67	3	91.5	68	23.5	26.3	13	3.5 +0.2	90°	45°

Ordering data		Interface		Part no.	Type
For integrated drive	Gear ratio	Output	Motor		
EMCA-EC-67	1	67 A	SEC-67	2321480	EMGC-67-A-G1-SEC-67