



Vacuum gauges

FESTO

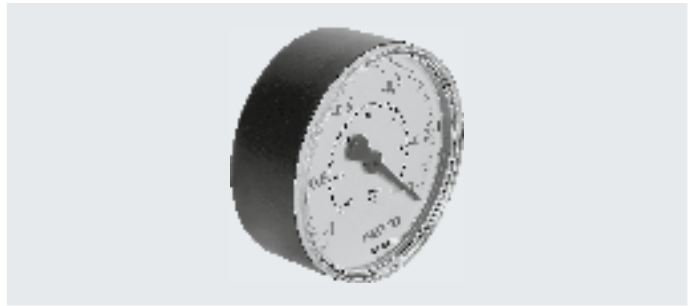


Data sheet

Vacuum gauge VAM, EN 837-1

-  - Temperature range
-10 ... +60°C
-  - Pressure
-1 ... +9 bar

- Analogue display via Bourdon tube
- Vacuum gauges can be loaded up to 3/4 of their full-scale value under constant load and up to 2/3 of their full-scale value under alternating load.



General technical data

Nominal size, pressure gauge	40	63	
Type	VAM-40-V1/0	VAM-63-V1/0	VAM-63-V1/9
Pneumatic connection	R1/8	R1/4	
Operating pressure [bar]	-1 ... 0	-1 ... 0	-1 ... +9
Operating medium	Compressed air to ISO 8573-1:2010 [7:4:4]		
Note on operating/pilot medium	Lubricated operation possible (in which case lubricated operation will always be required)		
Design	Bourdon tube pressure gauge		
Based on standard	EN 837-1		
Type of mounting	Screw-in		
Type of seal on screwed trunnion	Coating		
Mounting position	Any		
Connection position	Centred, rear		
Ambient temperature [°C]	-10 ... +60		
Temperature of medium [°C]	-20 ... +60		
Measurement accuracy class	2.5		
Continuous load factor	0.75		
Intermittent load factor	0.66		

Display

Nominal size, pressure gauge	40	63	
Type	VAM-40-V1/0	VAM-63-V1/0	VAM-63-V1/9
Scale	Double scale	Double scale	Double scale
	Bar (external)	Bar (external)	Bar (external)
	inchHg (internal)	inchHg (internal)	inchHg/psi (internal)
Indicating range [bar]	-1 ... 0	-1 ... 0	-1 ... +9
	[inchHg]	-30 ... 0	-30 ... 0
	[psi]	-	0 ... +130

Product weights [g]

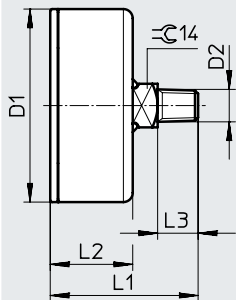
Nominal size, pressure gauge	40	63
VAM	63	83

Materials

Housing	ABS
Inspection window	PS
Screwed trunnion	Brass
Note on materials	RoHS-compliant

Data sheet

Dimensions





Type	D1 ∅	D2	L1	L2	L3
VAM-40	39 ±0.5	R1/8	46 ±1	26 ±0.5	12
VAM-63-V1/0	62 ±0.5	R1/4	50 ±1	29 ±0.5	13
VAM-63-V1/9	62 ±0.5	R1/4	47.5 ±1	26.5 ±0.5	13

Ordering data

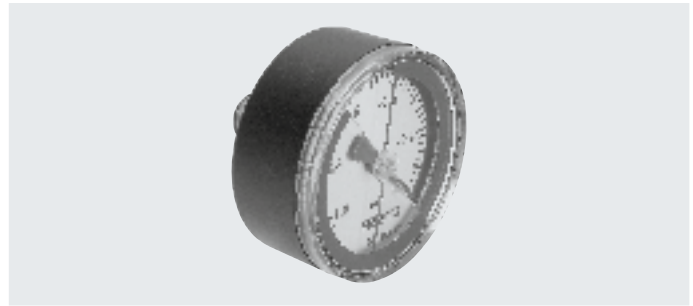
Nominal size, pressure gauge	Pneumatic connection	Indicating range			Part no.	Type
		[bar]	[inchHg]	[psi]		
40	R1/8	-1 ... 0	-30 ... 0	-	537810	VAM-40-V1/0-R1/8-EN
63	R1/4	-1 ... 0	-30 ... 0	-	537811	VAM-63-V1/0-R1/4-EN
		-1 ... 9	-30 ... 0	0 ... +130	537814	VAM-63-V1/9-R1/4-EN

Data sheet

Vacuum gauge VAM, EN 837-1 With red/green range

-  Temperature range
-10 ... +60°C
-  Pressure
-1 ... 0 bar

- Analogue display via Bourdon tube
- Vacuum gauges can be loaded up to 3/4 of their full-scale value under constant load and up to 2/3 of their full-scale value under alternating load.
- The adjustable red-green range provides additional safety during vacuum monitoring



General technical data

Nominal size, pressure gauge	40	63
Type	VAM-40-V1/0-R1/8	VAM-63-V1/0-R1/4
Pneumatic connection	R1/8	R1/4
Operating pressure [bar]	-1 ... 0	
Operating medium	Compressed air to ISO 8573-1:2010 [7:4:4]	
Note on operating/pilot medium	Lubricated operation possible (in which case lubricated operation will always be required)	
Design	Bourdon tube pressure gauge	
Based on standard	EN 837-1	
Type of mounting	Screw-in	
Type of seal on screwed trunnion	Coating	
Mounting position	Any	
Connection position	Centred, rear	
Ambient temperature [°C]	-10 ... +60	
Temperature of medium [°C]	-20 ... +60	
Measurement accuracy class	2.5	
Continuous load factor	0.75	
Intermittent load factor	0.66	

Display

Nominal size, pressure gauge	40	63
Type	VAM-40-V1/0-R1/8	VAM-63-V1/0-R1/4
Scale	Single scale	Single scale
	Bar	Bar
Indicating range [bar]	-1 ... 0	

Product weights [g]

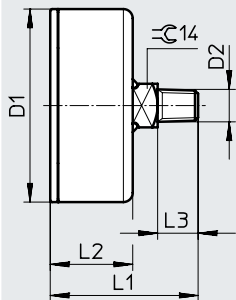
Nominal size, pressure gauge	40	63
Type	VAM-40-V1/0-R1/8	VAM-63-V1/0-R1/4
VAM	65	90

Materials

Housing	ABS
Inspection window	PS
Segments	PS
Screwed trunnion	Brass
Note on materials	RoHS-compliant

Data sheet

Dimensions





Type	D1 ∅	D2	L1	L2	L3
VAM-40-...-E-RG	39 ±0.5	R1/8	48.5 ±1	28.5 ±0.5	12
VAM-63-...-E-RG	62 ±0.5	R1/4	53 ±1	32 ±0.5	13

Ordering data				
Nominal size, pressure gauge	Pneumatic connection	Indicating range [bar]	Part no.	Type
40	R1/8	-1 ... 0	547842	VAM-40-V1/0-R1/8-E-RG
63	R1/4	-1 ... 0	547843	VAM-63-V1/0-R1/4-E-RG

Data sheet

Vacuum gauge VAM, EN 837-1

-  Temperature range
-10 ... +60°C
-  Pressure
-1 ... 0 bar

- Analogue display via Bourdon tube
- Vacuum gauges can be loaded up to 3/4 of their full-scale value under constant load and up to 2/3 of their full-scale value under alternating load.



General technical data		
Nominal size, pressure gauge	40	63
Pneumatic connection	G1/8	G1/4
Operating pressure [bar]	-1 ... 0	-1 ... 0
Operating medium	Compressed air to ISO 8573-1:2010 [7:4:4]	
Note on operating/pilot medium	Lubricated operation possible (in which case lubricated operation will always be required)	
Design	Bourdon tube pressure gauge	
Based on standard	EN 837-1	
Type of mounting	Front panel mounting	
Type of seal on screwed trunnion	Coating	
Mounting position	Any	
Connection position	Centred, rear	
Ambient temperature [°C]	-10 ... +60	
Temperature of medium [°C]	-20 ... +60	
Measurement accuracy class	2.5	
Continuous load factor	0.75	
Intermittent load factor	0.66	

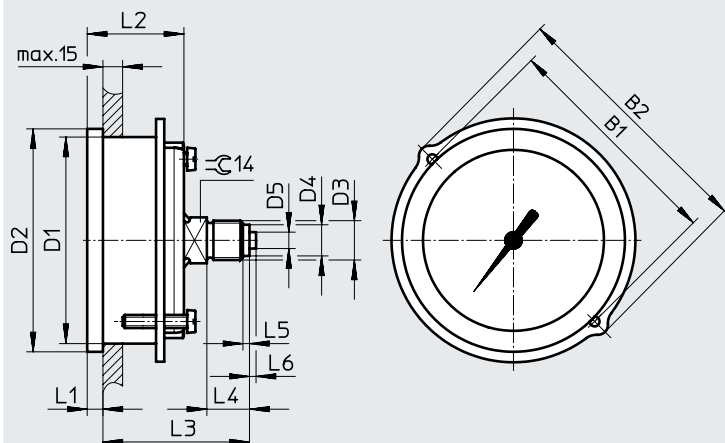
Display		
Nominal size, pressure gauge	40	63
Scale	Double scale	Double scale
	Bar (external)	Bar (external)
	inchHg (internal)	inchHg (internal)
Indicating range [bar]	-1 ... 0	-1 ... 0
	[inchHg]	-30 ... 0

Product weights [g]		
Nominal size, pressure gauge	40	63
FVAM	81	121

Materials	
Housing	ABS
Inspection window	PMMA
Screwed trunnion	Brass
Note on materials	RoHS-compliant

Data sheet

Dimensions



Type	B1	B2	D1 ∅	D2 ∅	D3	D4 ∅	D5 ∅	L1	L2	L3	L4	L5	L6
FVAM-40	48	56	40	45	G1/8	8	–	4.5	26.5	40	10	2	–
FVAM-63	70	79	63	68	G1/4	9.5	5	4.8	29.5	42.5	13	2	2

Ordering data

Nominal size, pressure gauge	Pneumatic connection	Indicating range		Part no.	Type
		[bar]	[inchHg]		
40	G1/8	-1 ... 0	-30 ... 0	537812	FVAM-40-V1/0-G1/8-EN
63	G1/4	-1 ... 0	-30 ... 0	537813	FVAM-63-V1/0-G1/4-EN